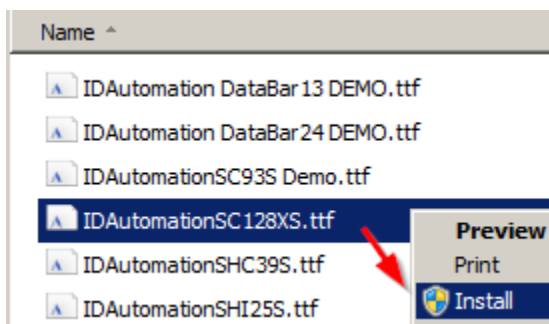


[.NET Assembly Font Encoder \(Demo\)](#)

The .NET Standard, .NET Core and encoder source code files are not included in this demo version. This demo version contains watermarks in the barcode fonts and an intermittent pop-up notice in the assembly. To obtain the complete product, including the source code files that may be compiled into your app without the assembly, purchase any Developer License to a compatible [IDAutomation Font Package](#).

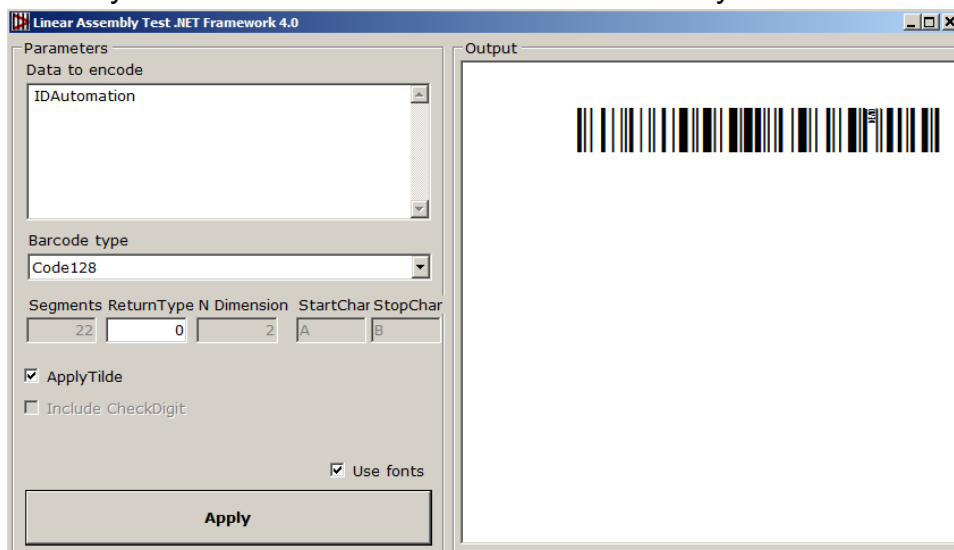
This demo version of the font encoder is provided with a demo app, fonts and app source. The assembly is needed to format data to the fonts so a correct barcode is generated. Perform the following steps to test the basic capabilities of the assembly.

1. In the **Demo Fonts** folder, right-click on each font you wish to evaluate and choose Install.



Font Package	Demo Font Name
Code 128	IDAutomationSC128XS
Code 39	IDAutomationSHC39S
Code 93	IDAutomationSC93S
Interleaved 2 of 5 (ITF)	IDAutomationSHI25S
GS1 DataBar	IDAutomation DataBar
GS1 UPC/EAN	IDAutomationSUPCEANS
Universal	IDAutomationSUniS

2. In the **Demo App** folder run BarcodeGenerationExample.exe and choose the barcode type according to the fonts that have been installed. Select the **Use Fonts** checkbox to see only the text that is returned from the assembly.



3. In the **Demo App Source** folder, open BarcodeGenerationExample.sln with Visual Studio 2019 or greater to understand how the app encodes data for the barcode fonts. For more information, refer to the [.NET Assembly Tutorial](#).

